

Decomposition and Evaluation of Graph Transformation Rules

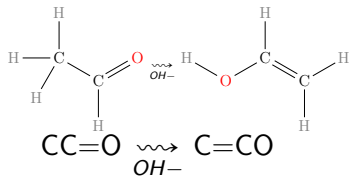
Daniel Merkle & Jakob Lykke & Tobias Madsen

Department of Mathematics and Computer Science (IMADA)
SDU Odense

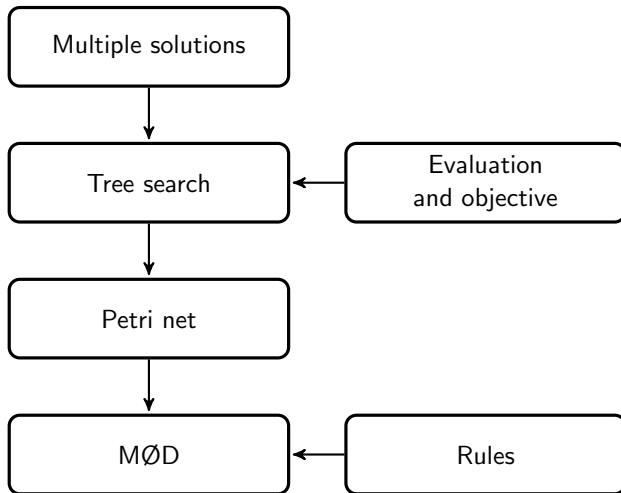
TBI Winterseminar in Bled, 2019

My master

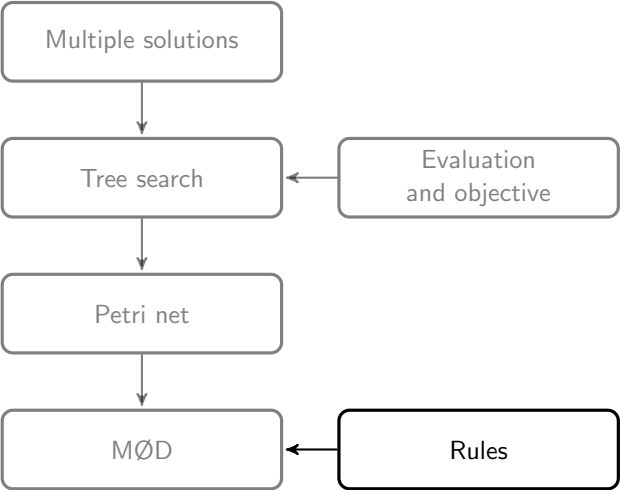
- ▶ Systematically find reaction mechanisms
- ▶ Elementary steps, using few general graph transformation rules
- ▶ Replaceable objective and evaluation function



My master

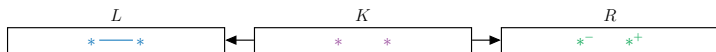


My master

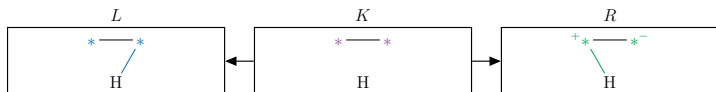


Rules

Charge separation

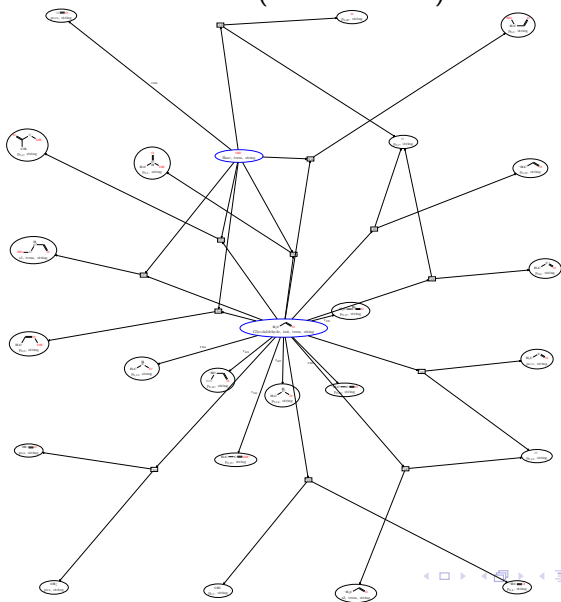


Hydrogen move



Rules

1 iteration (23 new nodes)



Rules

Full reaction network:
100 000+ nodes

Rules

Full reaction network:

100.000+ nodes

Disallow:

Rings of 3 and 4 atoms

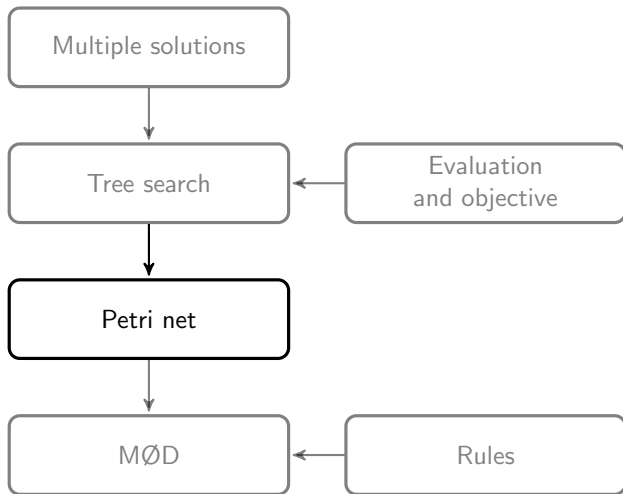
C with less than 3 bonds

H with a double bond or H⁺ with 2 bonds

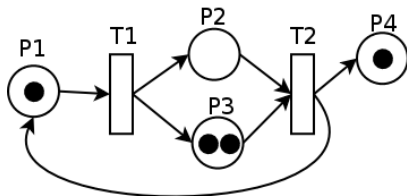
New reaction network:

40 000 nodes

14 000 them are allowed



Petri net



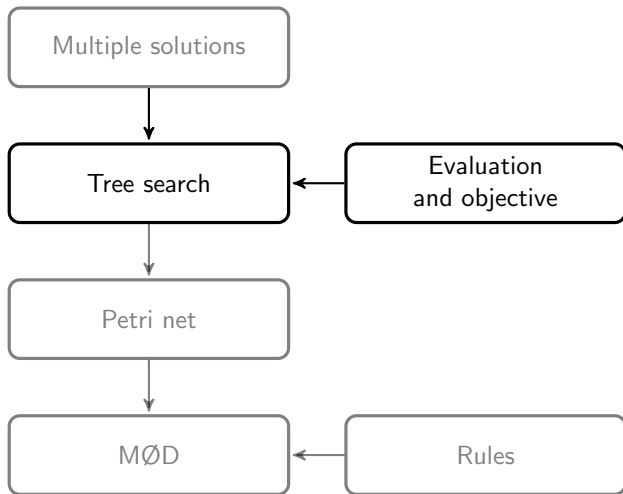
Molecules are places

Rules applied are the transitions

Tokens used to represent current molecules

Markings are different states of the reaction

States: 18 000



Tree search

Search through markings

Use A*/Dijkstra like search

Evaluation function for edges between markings

Objective function to minimize

Objective and Evaluation

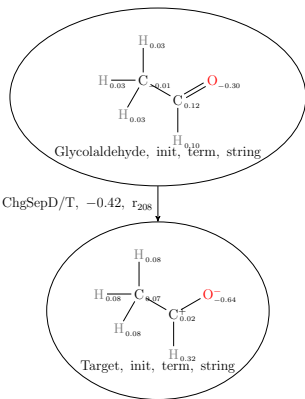
Partial charge

Use library to calculate Gasteiger charges

Calculate difference between atoms

atom gaining electron – atom giving electron

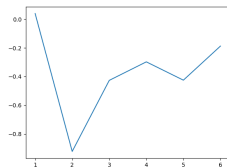
$$-0.30 - 0.12 = -0.42$$



Objective and Evaluation

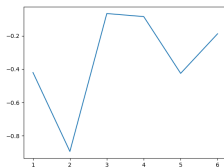
Partial charge

Min sum



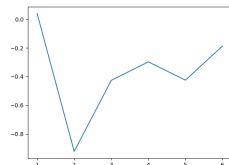
Edge weights

Min maximum

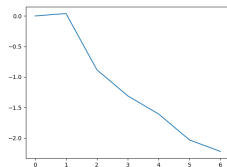


Edge weights

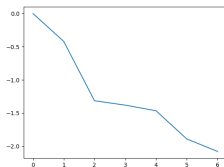
Min #sign changes



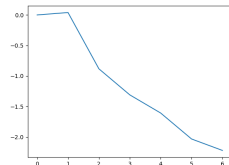
Edge weights



Cumulative weights



Cumulative weights

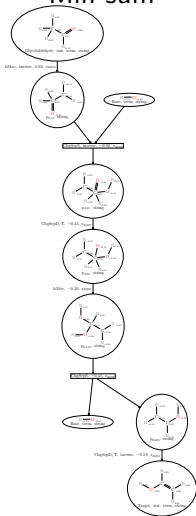


Cumulative weights

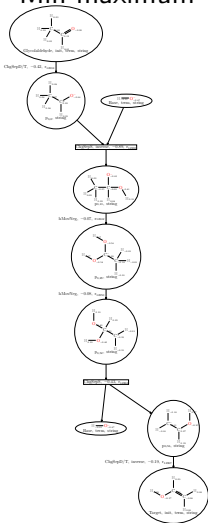
Objective and Evaluation

Partial charge

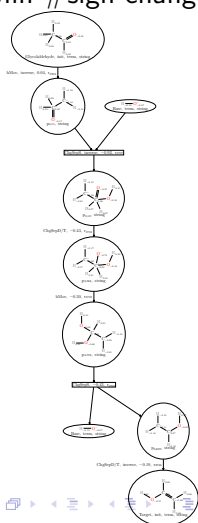
Min sum



Min maximum



Min #sign changes



Objective and Evaluation

Energy

Use library to calculate energy using force field (Merck Molecular Force Field)

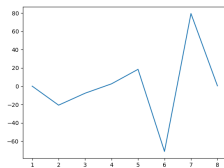
Calculate difference in total energy

Some molecules could not be embedded to 3D

Objective and Evaluation

Energy

Min sum



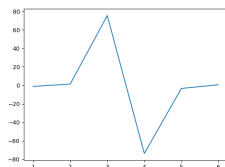
Edge weights

Min maximum

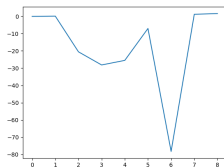


Edge weights

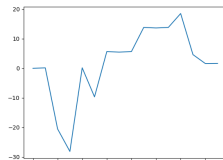
Min #sign changes



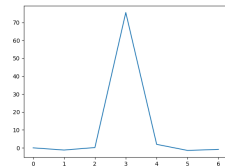
Edge weights



Cumulative weights



Cumulative weights

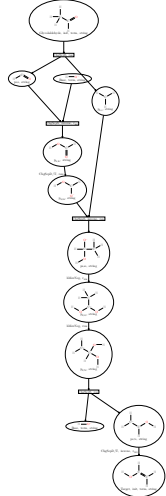


Cumulative weights

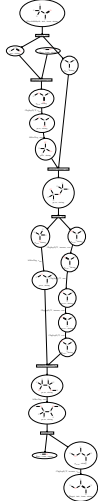
Objective and Evaluation

Energy

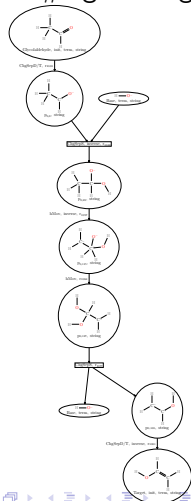
Min sum

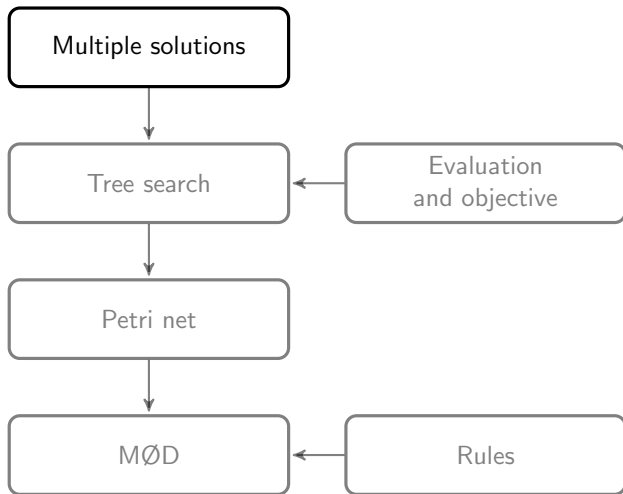


Min maximum



Min #sign changes





Multiple solutions

Partial charge, Min maximum

